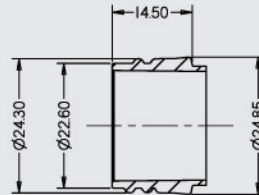
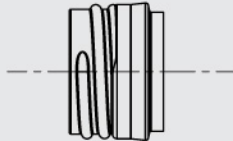
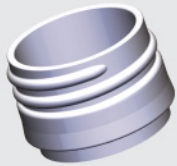


Neck Finishes



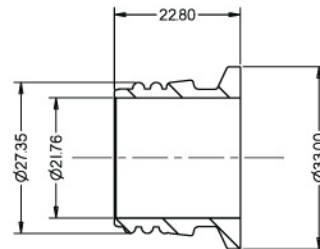
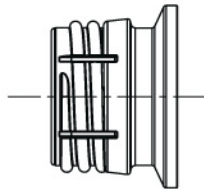
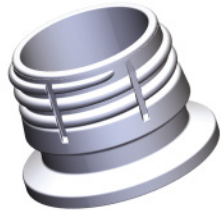
www.sachimolds.com

25mm ROPP



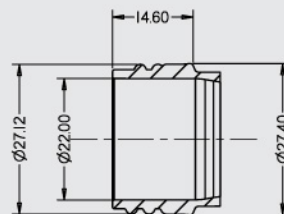
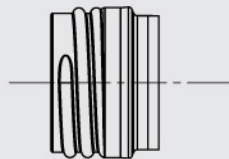
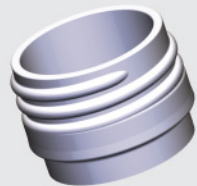
Number of Starts : Single
 Thread Start : 1.40 mm
 Thread Pitch : 3.18 mm
 Thread Turn : 720°
Neck Weight : 2.8 gm

28mm BPF-C



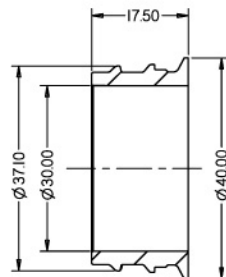
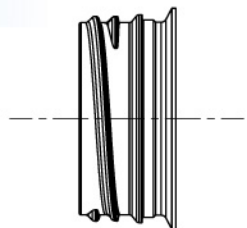
Number of Starts : Single
 Thread Start : 1.75 mm
 Thread Pitch : 3.18 mm
 Thread Turn : 720°
Neck Weight : 6.2 gm

28mm ROPP



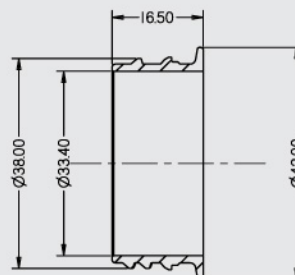
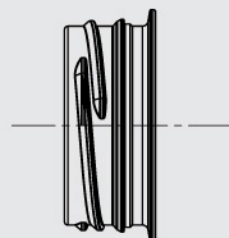
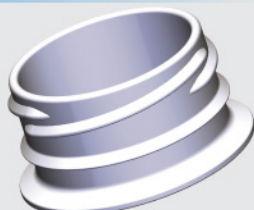
Number of Starts : Single
 Thread Start : 1.57mm
 Thread Pitch : 3.18 mm
 Thread Turn : 720°
Neck Weight : 3.7 gm

38mm 2Start HF Bericap



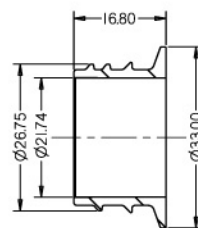
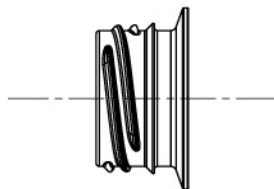
Number of Starts : Two
 Thread Start : 1.40 mm
 Thread Pitch : 7.26 mm
 Thread Turn : 180°
Neck Weight : 7.0 gm

38mm 3Start CF Bericap



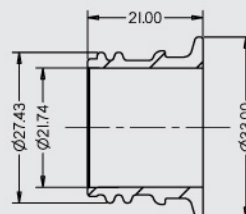
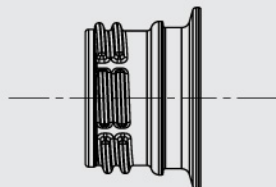
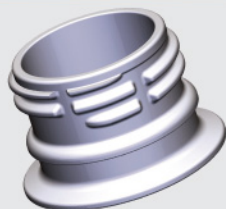
Number of Starts : Three
 Thread Start : 1.90 mm
 Thread Pitch : 9.00 mm
 Thread Turn : 120°
Neck Weight : 4.3 gm

26.7mm 3Start Alaska



Number of Starts : Three
Thread Start : 1.52 mm
Thread Pitch : 9.00 mm
Thread Turn : 120°
Neck Weight : 3.6 gm

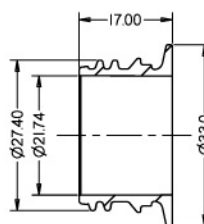
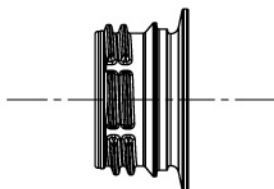
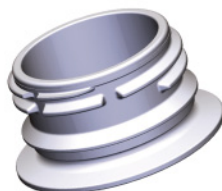
28mm PCO 1810



Number of Starts : Single
Thread Start : 1.70 mm
Thread Pitch : 3.18 mm
Thread Turn : 720°
Neck Weight : 5.1 gm

28mm PCO 1881

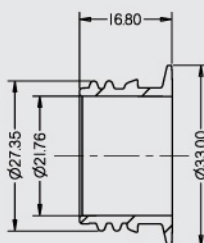
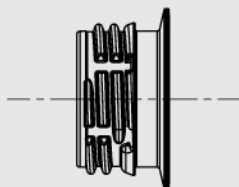
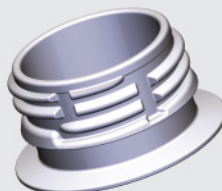
New



Number of Starts : Single
Thread Start : 1.70 mm
Thread Pitch : 2.70 mm
Thread Turn : 650°
Neck Weight : 3.74 gm

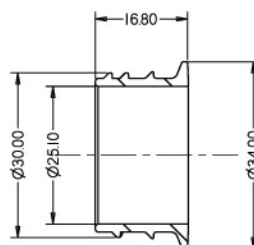
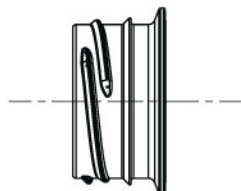
28mm PCO Corvaglia

New



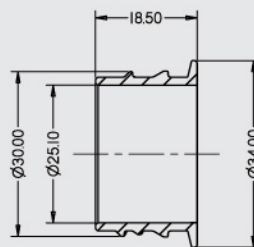
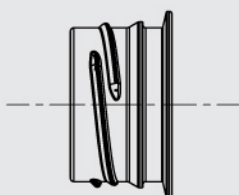
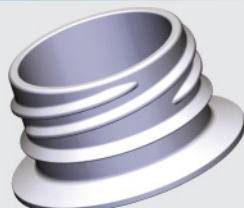
Number of Starts : Single
Thread Start : 1.70 mm
Thread Pitch : 2.80 mm
Thread Turn : 744°
Neck Weight : 3.57 gm

30/25 3Start Low



Number of Starts : Three
Thread Start : 1.50 mm
Thread Pitch : 9.00 mm
Thread Turn : 120°
Neck Weight : 3.7 gm

30/25 3Start High



Number of Starts : Three
Thread Start : 3.00 mm
Thread Pitch : 9.00 mm
Thread Turn : 120°
Neck Weight : 3.9 gm